

# STEINWEG

## SUPERLIFT<sup>200</sup>/300





# STEINWEG

# SUPERLIFT

## The powerful hoist for building and repair work

The STEINWEG SUPERLIFT is a practical and extremely useful hoist with applications throughout the construction, renovation, and building trades. It has a capacity of 200 kg and is supplied either as a rope hoist (200 S) or rack-and-pinion hoist (200 Z). The rack-and-pinion hoist 300 Z lifts 300 kg upto 100 m.

Here are the special advantages:

- easy transportation and low weight
- quick assembly of the aluminium mast whilst standing in the platform - especially with the rack-and-pinion hoist
- swivelling platform 1,40 x 1,80 m, loading ramp electrically interlocked
- powerful drive unit
  - single phase 110/230 V for 200 S
  - 230 V for 200 Z
  - three phase 400 V for 300 Z
- speed governed safety brake
- operation by manual push button control unit (UP/DOWN/EMERGENCY STOP) on 5 m long cable. Additional control at landings.
- base enclosure 1,10 m high with electrically interlocked barrier
- landing gates 1,10 m high, electrically interlocked
- max. hoisting height 50 m (200 S/Z) or 100 m (300 Z)



### Assembly of the mast

The main advantage of the rack-and-pinion hoist is its easy assembly. The 2 m long mast sections can be plugged easily into each other by one man. They are connected by fixed bolts. The fitter operates the hoist with the assembly control unit when standing in the platform.

### Transportation

For easier transportation on site the base unit is equipped with 2 rubber tyred wheels. The platform remains on the unit. After levelling with spindles, the assembly of the mast can start.

### Fixing of the mast

At the rear of the mast there is a groove to take all fixing devices for stepless fixing to the building or scaffolding. The scaffold fixing device with its two couplers clamps to a scaffold tube. The wall fixing device is bolted to the masonry and can be connected to the parapet clamp for windows or balconies.





# STEINWEG SUPERLIFT

**The aluminium platform hoist that reaches the heights**



**Platform**

The 1,40 x 0,80 m aluminium platform takes all loads. It is loaded and unloaded by means of a hinged ramp, which is electrically interlocked. Unloading is very safe as the platform swivels through 90° direct in front of the building or scaffolding. An interlock prevents up- or downward travel when the platform is in the unloading position. A speed governed safety brake stops the downward travel at a preset over-speed.



**Scaffold transport**

Scaffold elements, boards, and other bulky goods can be transported safely as the platform has a 1,80 m high frame on three sides. For scaffolders we recommend the rack-and-pinion hoist 200 Z (upto 50 m) or 300 Z (upto 100 m).

**Base enclosure, landing gates and control at landings**

The new CE-regulations require the base station and the landings to be secured. The 1,10 m high base station enclosure fences the hoist at a distance of 0,50 m and has an electrically interlocked barrier. The landing gates are secured by 1,10 m high, electrically interlocked sliding gates that bolt onto 2 vertical scaffold tubes. The hoist can only operate with the barrier and doors closed.

Control units with push buttons UP/STOP/DOWN/EMERGENCY STOP are supplied to control the hoist from the landings.

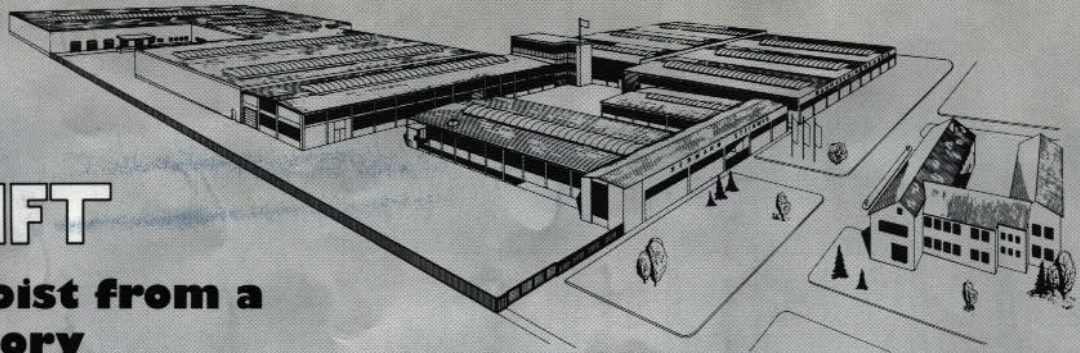


**SUPERLIFT...because it is really SUPER**



# STEINWEG SUPERLIFT

**A modern hoist from a modern factory**



### Operation

The hoist is operated by a push button control unit UP/DOWN/EMERGENCY STOP. The rope hoist 200 S operates in "dead man control", the rack-and-pinion hoists 200 Z and 300 Z in "press to run" mode above 2 m height. Limit switches and emergency limit switches limit the hoistway.

### Rope drive

The SUPERLIFT 200 S is equipped with a special drive unit. The 1,2 kW gearbox brake motor is located inside the 320 mm long rope drum. It is therefore protected against dust and weather. The slack rope device optimizes the smooth spooling of the rope.



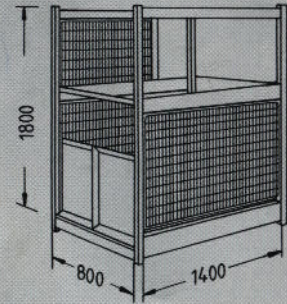
### Rack-and-pinion drive

The SUPERLIFT 200 Z/300 Z is equipped with a powerful gearbox brake motor, the pinion of which engages with the rack on the mast. The drive unit is suspended in a pendular way and is torsioned by a shock absorber to improve the start momentum. There is an overload protection on the SUPERLIFT 300 Z.



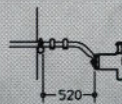
### Pivotable platform

1,40 x 0,80 x 1,80 m

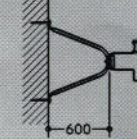


### Fixing devices

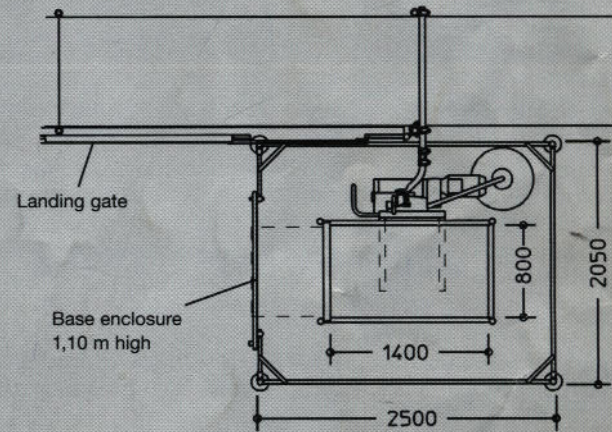
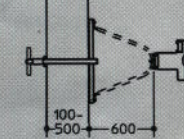
Scaffold fixing device



Wall fixing device



Parapet Clamp



### Technical data

	SUPERLIFT 200 S
Capacity	200 kg
Platform	1,40 x 0,80 x 1,80 m
Max. hoisting height	50 m
Hoisting speed	25 m/min
Height alu-mast	2 m
Weight alu-mast	15 kg
Fuse	1,2 Amps slow
Voltage	110/230 V/50 Hz
Controls	42 V

### Technical data

	SUPERLIFT 200 Z	SUPERLIFT 300 Z
Capacity	200 kg	300 kg
Platform	1,40 x 0,80 x 1,80 m	
Max. hoisting height	50 m	100 m
Hoisting speed	25 m/min	30 m/min
Height alu-mast	2 m	2 m
Weight alu-mast	24 kg	24 kg
Fuse	16 Amps slow	16 Amps
Voltage	230 V/50 Hz	400 V/50 Hz
Controls	42 V	42 V